

Saksham Telecom Pvt. Ltd.

Connecting businesses across Haryana with reliable, high-speed internet solutions since 2011

✉ Dharam@sakshamtel.com ☎ +91-90500-09457

Follow Us: [f](#) [t](#) [v](#) [in](#)

[Home](#)[About Us](#)[Features](#)[Availability](#)[Product's](#)[Services](#)[News](#)[Differentiators](#)[Gallery](#)[Jobs](#)[Contact](#)

High-Speed Internet

Reliable Network • 24×7 Support

Specialized in:

- ✓ Wireless Connectivity Solutions
- ✓ IT Infrastructure Setup
- ✓ Enterprise & Home Internet
- ✓ Long-Range Point-to-Point Links

SAKSHAM TELECOM
PVT. LTD.

About Saksham Telecom

Our Foundation

Established in 2011, Saksham Telecom Pvt. Ltd. secured its operational licence in 2015 and opened its first branch in Rewari. Today, we stand as a trusted telecommunications provider with 35 dedicated team members serving clients across Haryana.

Director: Mr Dharmender Yadav

Chief Executive Officer: Mr Virender Singh

Contact: Available through our website at sakshamtel.com

Company Classification

Saksham Telecom operates as a comprehensive telecommunications service provider, specialising in internet leased lines, broadband connectivity, and wireless network solutions for corporate and institutional clients.

Our extensive infrastructure supports businesses ranging from manufacturing facilities to educational institutions, delivering consistent, high-performance connectivity solutions.

Our Mission & Vision

Mission

To deliver reliable, high-speed telecommunications infrastructure that empowers businesses to operate efficiently, connect seamlessly, and grow confidently in an increasingly digital landscape.

Vision

To be Haryana's most trusted telecommunications partner, recognised for exceptional service quality, technological innovation, and unwavering commitment to connecting communities and businesses across the region.



Comprehensive Service Portfolio



Internet Leased Lines (ILL)

Dedicated 1:1 bandwidth connectivity available in 8 Mbps, 12 Mbps, and 16 Mbps options. Ideal for businesses requiring consistent, uncontended internet speeds for critical operations and data transfer.



Broadband Services

Shared ratio broadband (1:8) offering cost-effective connectivity at 8 Mbps, 12 Mbps, and 16 Mbps speeds. Perfect for small to medium enterprises requiring reliable internet at competitive rates.



RF Link Installation

Complete wireless link setup including Cisco 1841 Router configuration with NAT and PAT. One-time installation charge of ₹16,500 provides robust wireless connectivity infrastructure.



Wireless Network Topology

Custom-designed wireless network solutions tailored to client requirements, ensuring optimal coverage, reliability, and performance across multiple sites and geographical locations.

Pricing & Service Plans

Our transparent pricing structure ensures you receive exceptional value with enterprise-grade connectivity solutions. All prices shown are annual rates with 15% tax included.

<u>Service Description</u>	<u>Speed</u>	<u>Qty</u>	<u>Unit Price</u> <u>(₹)</u>	<u>Annual Amount</u> <u>(₹)</u>	<u>Tax Rate</u>
ILL (IBW) 1:1 - Option A	8 Mbps	NOS	25,200	3,02,400	18%
ILL (IBW) 1:1 - Option B	12 Mbps	NOS	34,200	4,10,400	18%
ILL (IBW) 1:1 - Option C	16 Mbps	NOS	37,600	4,51,200	18%
Broadband 1:8 - Option A	8 Mbps	NOS	15,600	1,87,200	18%
Broadband 1:8 - Option B	12 Mbps	NOS	18,600	2,23,200	18%
Broadband 1:8 - Option C	16 Mbps	NOS	21,600	2,59,200	18%
RF Link Installation & OTC	-	One-Time	16,500	16,500	-

Extensive Regional Coverage



13 Active Branches

Strategic locations across Haryana including Gurgaon, Manesar, Bilaspur, Dharuhera, Bhiwadi, Khushkhera, Bawal, Shahjahanpur, Neemrana, Kotputli, Mahendergarh, Narnaul, and Jhajjar.

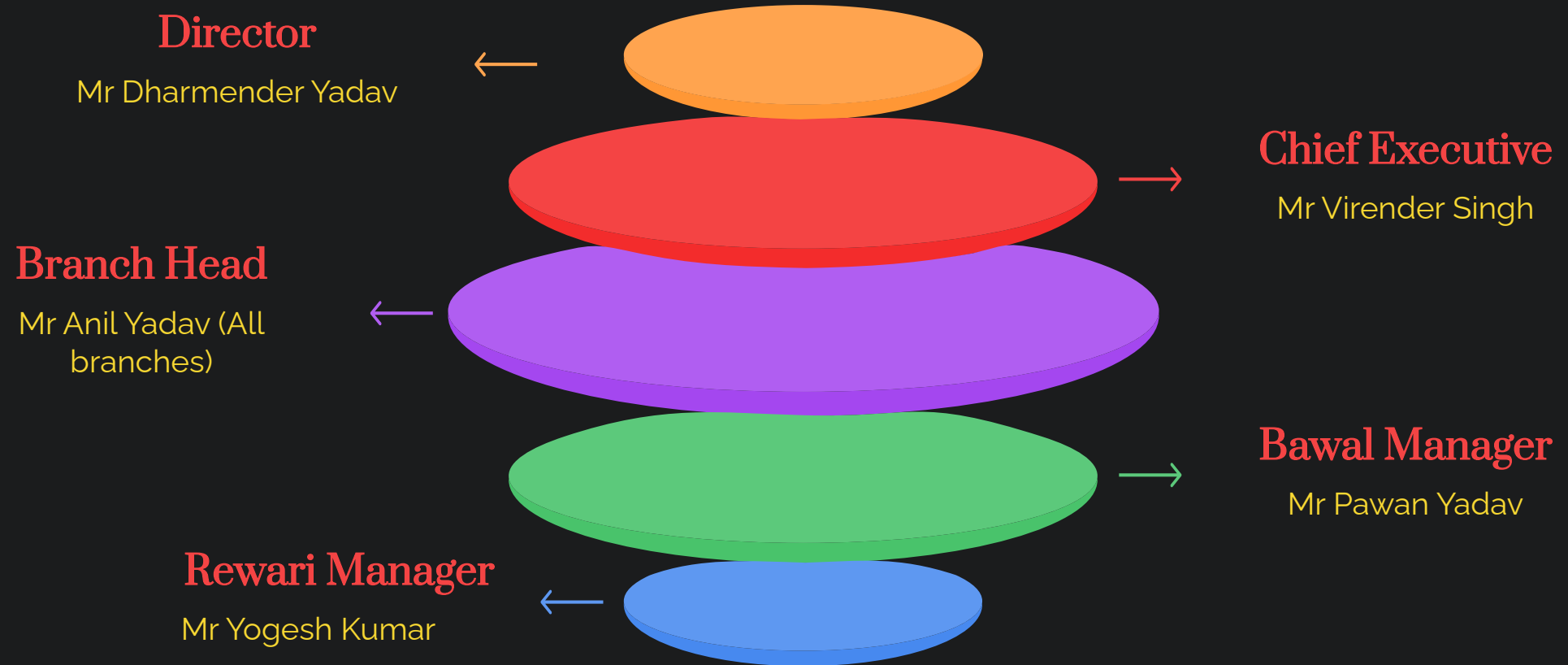
35 Team Members

Dedicated professionals providing technical support, installation services, customer care, and network maintenance across all operational territories.

Regional Expertise

Deep understanding of local infrastructure, regulatory requirements, and business needs enables rapid deployment and responsive support throughout the region.

Organisational Structure



Our leadership team combines strategic vision with hands-on operational expertise, ensuring consistent service quality and responsive customer support across all locations.

How We Work



1. Consultation

We assess your connectivity requirements, existing infrastructure, and business objectives to design optimal solutions.



2. Design

Our technical team creates customised network topology, selects appropriate equipment, and plans installation logistics.



3. Implementation

Professional installation with minimal disruption, complete configuration, and comprehensive testing ensure seamless deployment.



4. Support

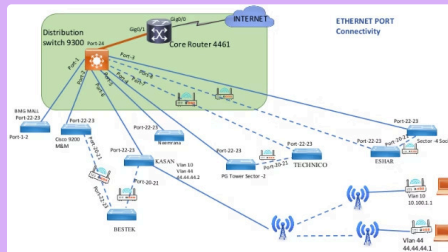
Ongoing monitoring, maintenance, and responsive technical support keep your network running optimally.

The STPL Advantage

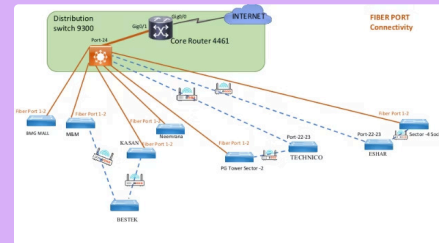
- Proven track record since 2011 with hundreds of satisfied clients
- Local presence and rapid response times across Haryana
- Competitive pricing without compromising service quality
- Enterprise-grade equipment and infrastructure
- Transparent billing and flexible contract terms
- Expert technical team with industry certifications

STPL Designs

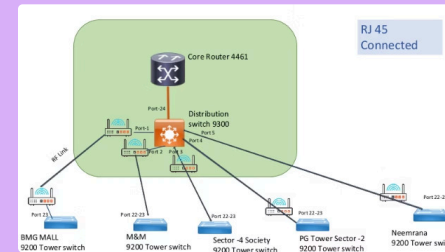
1.)



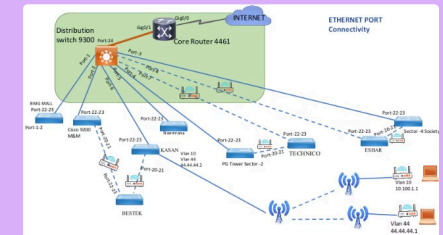
2.)



3.)



4.)



[illegible]

A network diagram illustrating a backup configuration. A central blue switch, labeled "Cisco spare switch", is connected to a black router at the top. The router has a white 'X' icon. To the right of the spare switch, there is an orange square icon with a white gear and a plus sign, representing a server or management station. Below the spare switch, there are three blue rectangular icons representing other switches. A person is shown sitting at a desk with a computer on the left, connected to the spare switch. The entire diagram is set against a white background with a red border on the left and top edges.

The diagram illustrates a network migration process. It is divided into two main sections: 'NEW' (left) and 'OLD' (right), both connected to a central 'INTERNET' cloud.

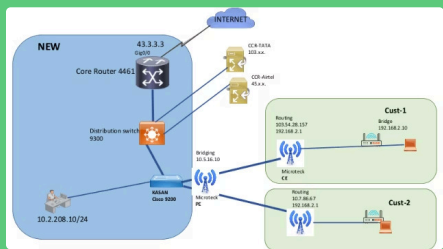
NEW Network Configuration (Left):

- Core Router 4461:** IP address 43.3.3.3, Gig0/0 interface connected to the Internet. It has a 'Port 24' connected to the Distribution switch.
- Distribution switch 9300:** Connected to the Core Router. It has a 'Port 1' connected to the AS/MS Cisco 9200.
- AS/MS Cisco 9200:** A blue router connected to the Distribution switch. It is connected to a desktop computer with IP address 10.2.208.10/24.
- Wireless Access Point:** Represented by a blue antenna icon, connected to the AS/MS Cisco 9200.

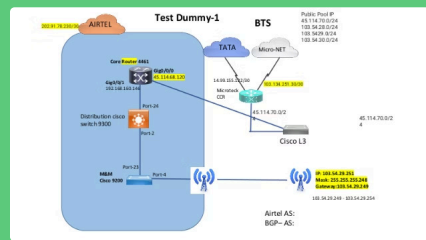
OLD Network Configuration (Right):

- Core Router:** IP address 10.3.5.0/0, connected to the Internet.
- Networks:** A circular network topology with three nodes:
 - Microstack PE:** A blue antenna icon.
 - Microstack CE:** A blue antenna icon.
 - Microstack CE:** A blue antenna icon.
- IP Addressing:** The network is labeled with IP address 10.3.5.0/0. Below the network, it lists 'Public static 88.46.91.14' and 'Private 10.10.10.10'.
- Wireless Access Points:** Two blue antenna icons are shown, one connected to the Microstack CE and one connected to the Microstack CE.

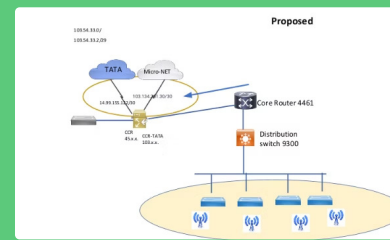
8.)



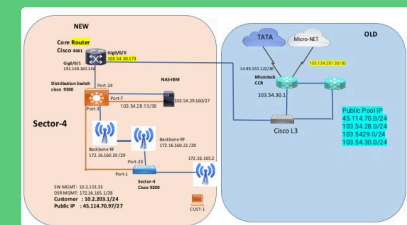
9.)



10.)



11.)



Project Management Excellence

Planning

Detailed project scoping, resource allocation, and timeline development

Optimisation

Continuous improvement through feedback, performance analysis, and upgrades



Execution

Coordinated installation with quality checkpoints at every stage

Monitoring

Real-time tracking of progress, performance metrics, and issue resolution

Our structured approach to project management ensures on-time delivery, budget adherence, and exceptional outcomes for every client engagement.

Key Differentiators



Rapid Deployment

Average installation time of 48-72 hours for standard configurations



Relationship Focus

Long-term partnerships built on trust, reliability, and consistent performance



Technical Expertise

Certified engineers with deep knowledge of Cisco, wireless, and fibre technologies

Trusted by Industry Leaders

Saksham Telecom proudly serves over 80 major clients across manufacturing, logistics, education, and retail sectors. Our proven reliability and performance have made us the connectivity partner of choice for organisations demanding excellence.



Major Internet Connectivity Customers

- A to Z Filtration Specialities Pvt Ltd
- Mitsui Kinzoku Components India Pvt Ltd
- Asahi India Glass Ltd
- Barmalt Malting India Pvt Ltd
- Caparo Maruti Ltd
- Posco India Delhi Steel Processing Centre
- PPAP Automotive Limited
- Premium Automation Pvt Ltd
- REI Agro Ltd
- Sona Fuji Kiko Automotive Ltd
- SSN Logistics Pvt Ltd
- Technico Industries Ltd
- TII India Pvt Ltd
- Varuna Integrated Logistics Pvt Ltd
- Keihin FIE
- Metal Dyne Auto Parts Pvt Ltd
- Nippon Paint Pvt Ltd
- Nissin ABC Logistics Pvt Ltd
- SKL Pvt Ltd
- Thermo Cabs
- Adhar Shila School
- Oxford International School
- PWS Parmalakshya School
- Shishu Shala
- Sunglow International School
- The Sagar School
- Kerala School
- Eye-Q-Vision Pvt Ltd
- Hema Engineering Industries Ltd
- Mahakal Industries
- Mercury Fabrics Pvt Ltd
- Plast Alloy India Ltd
- Aumtek Engicons India Pvt Ltd
- Heritage Haveli
- Rajeb Resorts Ltd
- Dagar Mines
- DTS Group
- Pargati Udhog
- Skytek Egg
- Sangath
- TCI Freight
- TCI XPS
- Super India (Global) Logistics Pvt Ltd
- CTC Translogistic
- Dagar Transport
- Jalan Transport
- B.S Motors
- Dewan Fourwheels
- S.R Auto Khuskera
- Bharat Patrol Pump (multiple locations)
- Jamnagar Filling Station
- MPLS Office (Jamnagar Filling Station)
- IX Telecom Centre-I
- IX Telecom Centre-II
- Idea Off Shoot
- KMS Offshoot Idea
- ULM Private Ltd
- ULM Amit Builders
- Amru Naru
- Jagdish Parsad Birj Parkash

Ready to experience the Saksham Telecom difference? Contact us today to discuss your connectivity requirements and discover how our tailored solutions can enhance your business operations.

Connect With Saksham Telecom

Ready to Transform Your Connectivity?

Discover how Saksham Telecom's reliable telecommunications infrastructure can power your organisation's digital ambitions. Our team of 35 experienced professionals stands ready to deliver customised solutions tailored to your specific requirements.

Contact us today to discuss your connectivity needs and receive a detailed quotation.

Visit: www.sakshamtel.com

Thank you for being with us today.

**At Saksham Telecom, we are
committed to delivering reliable
solutions and long-term value.
We look forward to working together.**



Your time and trust mean a lot to us.